

A NEW SPECIES OF THE GENUS *ANURIDA* LABOULBENE, 1865 (COLLEMBOLA, NEANURIDAE) FROM ROMANIA

TEODOR HARŞIA * and MAGDALENA GRUIA **

The authors describe a new species of edaphicolous collembola belonging to genus *Anurida*, found in the Apuseni Mountains, Romania.

Anurida ariesi n. sp.

Type locality: Sălciua de Jos, the Apuseni Mountains, 1,000 m altitude, E 30° slope, Brown Earth with calcic mull, on loamy deposits and jurassic limestone, beech forest (*Phyllitidi-Fagetum*, Vida, 1963).

Holotype: female from type sample, 17 V 1990, T. Harşia leg.

Paratypes: two females from type sample.

The type series in coll Institute of Speology „Emil Racoviţă”, Bucharest.

Description. Colour white. Body length: 0.5 mm. Coarse body granulation, arranged in delimited raised fields.

Antennal I segment with 7 setae, antennal segments III and IV fused on ventral side, slightly separated on dorsal side. Antennal organ III with two spheroidal sensory roads in a tegumental fold, dorsal antennal III organ guard seta S-shaped. Antennal segment IV with spheroidal, simple apical sensilla, and 6 differently shaped sensillae A and B thicker than the others, hammer-like, C and D blunt, E and F globular, smaller than C and D. Sensorial papilla p cylindrical and curved. Microchaeta m present (Fig. 1).

Ocelli absent. Postantennal organ circular, with 7—8 oval lobes (Fig. 2).

Mandibula with three teeth, the medial one smaller. Maxillary capitulum with four teeth. Lamella 1 simple, styloform, lamella 2 with short and curved terminal serrations, reaching beyond tip of capitulum lamella 3 with terminal three teeth (Fig. 3).

Labium with different granulation: one anterior-medial area with very fine granulation, with four setae, and without sensorial papillae, and one area with coarser granulation, with five setae (Fig. 4).

Tegument granulation on dorsal side of the body with delimited, symmetrically raised areas, except one medial area on the head. All dorsal setae included in the raised granulation areas. Setae very short, sensillae 1.5—2 longer than ordinary setae. Thorax I with 2+2 setae. Thorax II—III with 3,3 setae in the medial areas, 4,4 in the medial-lateral areas, and 3,3 setae in the lateral areas. Seta p_2 behind p_1 , sensilla p_3 in front of p_4 , lateral microsensilla ms present on the thorax II (Fig. 5). Abdomen I—III with 3, 3, 3, setae in the medial areas, 4, 4, 4, setae in the medial-lateral areas, and 4, 4, 4, setae in the lateral areas, sensilla in p_4 . Abdomen IV with 4 setae in the medial area, 4 setae in the medial-lateral area, and 4 setae in the lateral area, sensilla in p_4 . Abdomen V with 5 setae in the medial area, 2 setae in the medial-lateral area, and 2 setae in the lateral area, sensilla in p_3 (Fig. 6).

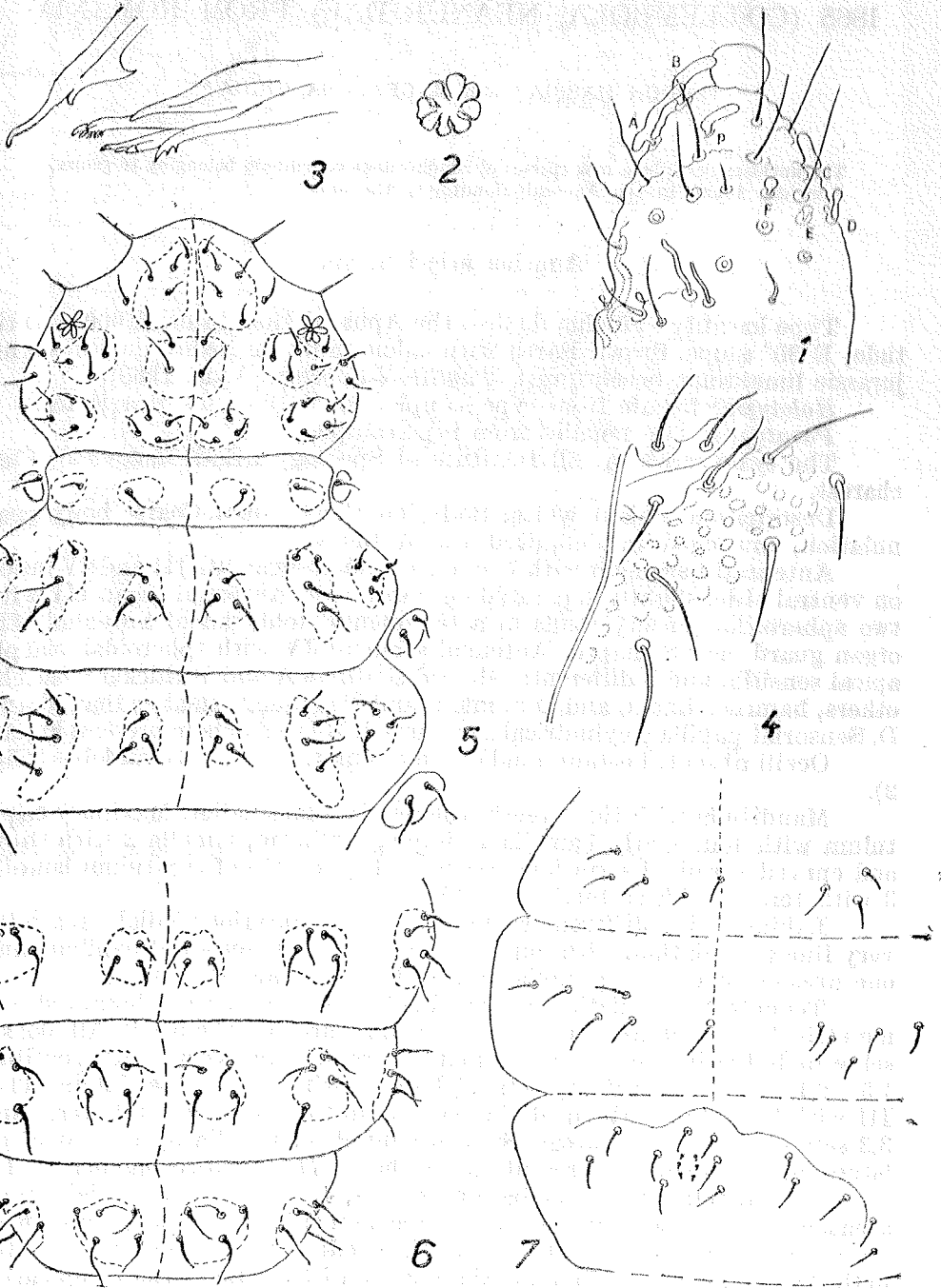


Plate: *Anurida ariesi* n. sp.

1. Antennal segments III-IV, dorso-lateral view (A, B, C, D, E, F - sensillae, p - sensorial papilla m - microchaeta). 2. Postantennal organ. 3. Mandibula and maxilla. 4. Labium chaetotaxy. 5. Head, thorax III dorsal chaetotaxy. 6. Abdomen III-V dorsal chaetotaxy. 7. Abdomen II-IV ventral chaetotaxy.

Ventrally, abdomen II and III with one medial seta (Fig. 7). Tenuaculum absent, furca absent, only 6 very small microsetae. Collophore with 4+4 setae. Subcoxae with 1-2-2 setae. Claws without teeth, tenent hairs acuminate.

Discussion: *Anurida ariesi* n. sp. is characterised by symmetrically raised granular areas on the body, hammer-shaped antennal sensillae, circular postantennal organ with simple oval lobes, absence of eyes, labium without sensorial papillae, seta p_2 behind p_1 and p_3 in front of p_4 on thorax II-III, m_4 absent on thorax II-III, p_3 absent on abdomen IV, a_1 , a_3 and a_4 present on abdomen V.

The new species resembles *Anurida ellipsoides* Stach, 1949 from Poland, but the raised granular areas are distinct, clearly delimited in another arrangement on the whole body, antennal segment IV sensillae are differently shaped and the postantennal organ is circular, with fewer lobes.

Raised granular areas also have *Anurida banyulensis* Denis, 1947 from France, but their disposition, as well as chaetotaxy and maxillae differ.

The new species differs from both *Anurida polaris* (Hammer, 1954) from Canada and *Anurida subarctica* Fjellberg, 1985 from Alaska, by the forward position of sensilla p_3 on thorax II-III, presence of 2+2 setae between sensillae p_4 on the abdomen IV, granulation and body size.

REFERENCES

- 1980 CHRISTIANSEN K. and BELLINGER P., *The Collembola of the North America, north of the Rio Grande*. Grinnell College, Grinnell.
- 1982 DEHARVENG L., *Contribution à la connaissance taxonomique et phylogénétique des Neanuridae 1. Le genre Rusekella n. g. et ses implications phylogénétiques*. Bull. Soc. Hist. Nat. Toulouse, 118, 235-251.
- 1985 FJELLBERG A., *Arctic Collembola I-Alaskan Collembola of the families Poduridae, Hypogastruridae, Odontellidae, Brachystomellidae and Neanuridae*, Ent. Scand., Suppl. 21, 1-126.
- 1984 FJELLBERG A., *Elements of dorsal chaetotaxy in Neanuridae with description of two new species of Anurida (Collembola)*. Ent. Scand., 15, 349-362.
- 1960 GISIN H., *Collembolenfauna Europas*. 87-97 p. Genève.
- 1967 MASSOUD Z., *Monographie des Neanuridae, Collemboles poduromorphes a pièces buccales modifiées*. Biol. Amer. Austr. III, C. N. R. S., 233-270, Paris.
- 1949 STACH J., *The Apterygotan fauna of Poland in relation to the world-fauna of this group of insects (Families Anuridae and Pseudachorutidae)*. Acta monegr. Mus. Hist. Nat. Krakow, 2-120 p.

** Institute of Speleology « Emil Racoviță », Bucharest

* Institute of Biological Researchs, Cluj-Napoca.

Received on September 9 1991